

AP PSYCHOLOGY

Ultimate Review Packet

Practice Test

Thank you for supporting my YouTube channel by purchasing this resource. This is not designed to replace your teacher, professor, or textbook, but I guarantee that practicing with this resource will improve your understanding of psychology.

-IMPORTANT -

Make sure you have gone through all of the units before taking this practice test. This test has been created to replicate the official AP Test and has questions from each of the 9 units. When taking the test make sure to set a timer for 70 minutes to simulate the actual test.

Once you have completed the test, view the answer key and go through the questions you got wrong. Look for any patterns or concepts that you might be missing. You can do this!

NOTE TO TEACHERS

Do not use/distribute any of these resources or show these videos in class unless you have purchased a license. The resources inside this packet, including this test, are meant to be used only by students that have an active license and should never be reposted online. For more information click the link below and scroll to the bottom.

([Click HERE for more information](#))

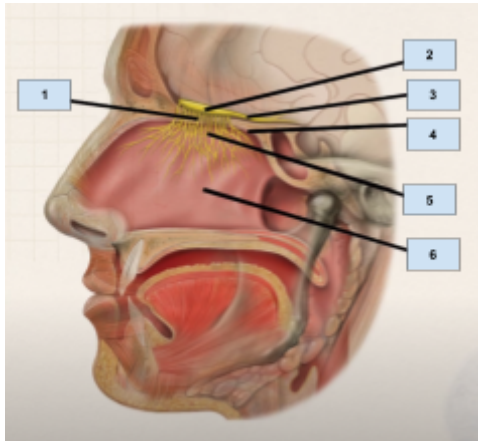
AP Psychology
Section 1

Time- 70 minutes
100 Questions

Directions: Each of the questions or incomplete statements below is followed by five suggested answers or completions. Select the one that is best in each case and then fill in the corresponding circle on the answer sheet.

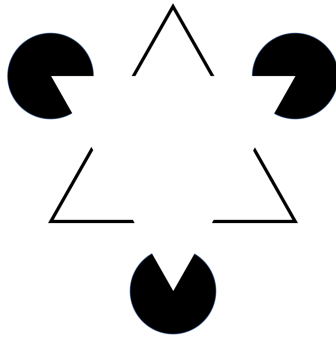
1. Which of the following studies does not fall under the behavioral approach to psychology?
 - a. A study that looks at the impact of an environment on a person's learning
 - b. A study that looks at how an individual reacts to external stimuli
 - c. A study that looks at an individual's unconscious motives and how they impact an individual's behavior
 - d. A study that looks at how positive and negative reinforcements impact an individual's learning
 - e. A study that looks at how an individual's behavior is shaped by conditioning
2. A _____ attraction is physical and intense, but lacks a strong commitment.
 - a. Companionate
 - b. Passionate
 - c. Consummate
 - d. Friend
 - e. None of the above
3. Nick wants to better understand which personality traits he might have. He is looking for a test that is more reliable and has validity. Which of the following types of tests would best fit his needs?
 - a. Projective personality test
 - b. Objective personality test
 - c. Aptitude test
 - d. Achievement test
 - e. Rorschach test
4. Which of the following correctly explains the difference between convergent thinking and divergent thinking?
 - a. Divergent thinking uses formal reasoning and focuses on logical conclusions. Convergent thinking uses heuristics to find the quickest solution that may not be the most obvious
 - b. Convergent thinking is when a person creates new solutions to a problem. Divergent thinking is when an individual looks at the possible solutions to a problem that are presented to them and picks the best one
 - c. Divergent thinking is when a person considers a variety of different possibilities and expands on the number of solutions to a problem. Convergent thinking is when a person takes a problem and narrows down the possible solutions
 - d. Convergent thinking is when a person uses emotional arguments to persuade another person. Divergent thinking is when a person uses logic and facts to persuade another person
 - e. Divergent thinking helps a person with their formal reasoning. Convergent thinking helps a person with their informal reasoning
5. Loot boxes in video games are often set up in a way that motivates players to keep opening another box in hopes of getting that one rare item. The goal is to get a high amount of responses from players. This is an example of which of the following reinforcement schedules?
 - a. Fixed-ratio schedule
 - b. Fixed-interval schedule
 - c. Variable-ratio schedule
 - d. Variable-interval schedule
 - e. Variable-fixed schedule

6. Travis got food poisoning from eating a cheeseburger. Now whenever he sees a cheeseburger he feels disgusted and has no interest in eating the burger. Which of the following answers explains what has occurred with Travis.
- Travis has learned through observational learning and developed a taste aversion
 - Travis has learned an association through trial and error learning
 - Travis now has a taste aversion, which is an example of a biological predisposition
 - Travis developed a taste aversion through positive punishment
 - Travis has experienced learned helplessness



7. Identify number 3 in the image above.
- Olfactory epithelium
 - Olfactory receptor cells
 - Olfactory bulb
 - Olfactory nerve
 - Gustation
8. Jerry struggles with falling asleep, he ends up sitting in bed for over an hour before he can fall asleep. When sitting in bed he can't stop thinking about all of the things he must do the next day, which causes him to stay awake. Which of the following disorders is most likely being described?
- Narcolepsy
 - Sleep terrors
 - Sleep apnea
 - Insomnia
 - REM

9. Which neurotransmitter helps with sleep, movement, and slows down your nervous system?
- Dopamine
 - GABA
 - Serotonin
 - Norepinephrine
 - Endorphins
10. A research team is looking to study the impact of sports on student's grades. Due to time and money they can only collect data on every student, but the team wants to make sure the results of the study represent the entire student body. Which of the following research designs should the research team utilize?
- Random assignment
 - A double-blind procedure
 - Longitudinal-study
 - A single-blind procedure
 - Random sampling
11. According to General Adaptation Syndrome the body will most likely experience what when it enters the last stage?
- The body will activate its flight or fight response
 - The body will try to stabilize but will stay at a higher level of tension
 - The body will become tired and the immune system will suffer
 - The body will fight of the threat and return to a new heightened state
 - The body will produce more glutamate to reduce primary needs
12. Which stage is a child sex determined?
- Zygote
 - Embryonic
 - Fetal
 - Germinal
 - Phenotype
13. _____ believed people have one general intelligence. Which can be measured with a single score.
- Charles Spearman
 - Howard Gardner
 - Robert Sternberg
 - Alfred Binet
 - Francis Galton



14. Which of the following answers would best explain why when looking at this picture you can see two triangles?
- The gestalt principle of closure
 - The monocular cue interposition
 - The gestalt principle of figure and ground
 - The monocular cue of linear perspective
 - The gestalt principle of texture and gradient
15. Which of the following is an example of an opioid?
- LSD
 - Peyote
 - Marijuana
 - Nicotine
 - Heroin
16. What was Stanley Milgram looking to study in his famous experiment?
- Group learning
 - Social norms
 - Obedience
 - Distributional attributes
 - Group think
17. _____ is a biomedical therapy that uses electrical stimulation, magnetic stimulation, and deep brain stimulation.
- Psychosurgery
 - Electroconvulsive therapy
 - Exposure therapy
 - Rational-emotive behavior therapy
 - Beck therapy
18. Philip is experiencing dizziness, body aches, and has thrown up multiple times. He went to the doctor to see what was wrong but the doctor found nothing physically wrong. Which of the following disorders is consistent with Philip's symptoms?
- Acute stress disorder
 - Somatic symptom disorder
 - Illness anxiety disorder
 - Hypochondriasis
 - Post-traumatic stress disorder
19. Luca's teachers notice that Luca often is distracted in school. He is not completing his homework on time, and has come to school in the same clothes for the past couple of days. Luca does not bring lunch to school and is often tired during class. According to Maslow's hierarchy of needs, what needs does Luca need fulfilled in order for him to start focusing more at school?
- Physiological needs
 - Safety needs
 - Love and belonging
 - Esteem
 - Self-actualization
20. Ava is starting to understand that not everyone thinks the same as her and that other people have different ideas and thoughts. What is most likely happening in this scenario?
- Ava is becoming egocentric
 - Ava is developing the theory of the mind
 - Ava can now understand reversibility
 - Ava can now understand conservation
 - Ava has entered the formal operational stage

21. At the start of the new school year Lucy, a high school teacher, tries to learn all 150 of her students' names. As Lucy learns her new students' names she finds it harder to remember her previous students' names. Which is most likely happening to Lucy?

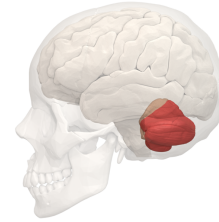
- a. Proactive interference
- b. Retrograde amnesia
- c. Retroactive interference
- d. Source amnesia
- e. Encoding failure

22. Karen has a test in 15 minutes on different psychology terms. She forgot to study and was trying to remember the definitions for the terms by repeating the terms with their definitions over and over again in her head. Which of the following encoding strategies is Karen using?

- a. Rote rehearsal
- b. Chunking
- c. Mnemonic device
- d. Semantic encoding
- e. Testing effect

23. Nicole and Brooklyn are talking about vacations. Brooklyn mentions that her favorite vacations are ones that involve theme parks. This causes Nicole to think about Disney World, popcorn, parades, and fun times. Nicole's association with "theme parks" best connects with which of the following answers?

- a. Functional fixedness
- b. Implicit memories
- c. Schema
- d. Assimilation
- e. Cognitive dissonance



24. Identify the brain structure in the image above. This structure enables smooth muscle movements and helps maintain equilibrium.

- a. Occipital lobe
- b. Pons
- c. Corpus callosum
- d. Cerebellum
- e. Temporal lobe

25. Which of the following groups does the IACUC look out for?

- a. High school students
- b. Animals
- c. Researchers
- d. Children
- e. Adults

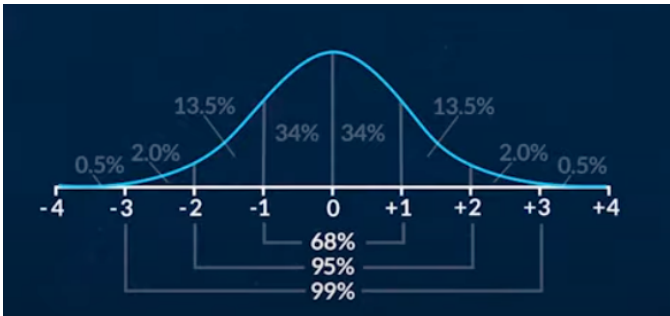
26. Binh has an exaggerated sense of worth, during class he draws pictures of him taking over the world, and he is certain that he is the smartest person in the school. If anyone disagrees with him he often gets upset. Which of the following disorders is consistent with Binh's symptoms?

- a. Avoidant personality disorder
- b. Schizotypal personality disorder
- c. Narcissistic personality disorder
- d. Borderline personality disorder
- e. Antisocial personality disorder

27. Sally was waiting in line for the store to open for black Friday. Once the store opened the group outside started to yell and rush the store. Instead of assessing the situation Sally rushes in with everyone else. Which of the following concepts most likely occurred?

- a. Social facilitation
- b. Social inhibition
- c. Group polarization
- d. Deindividuation
- e. In-group bias

28. Which of the following concepts would explain why a person feels the need to give a gift to someone who gave them a gift?
- Social norms
 - Reciprocity norms
 - Bystander effect
 - Social trap
 - Group polarization
29. Which of the following disorders would most likely have hallucinations as a symptom?
- Psychotic disorders
 - Trichillitilamania
 - Obsessive-compulsive disorders
 - Generalized anxiety disorder
 - Agoraphobia
30. Which of the following medications would an individual with ADHD most likely use to help with focus?
- Anti-anxiety medication
 - Antidepressants
 - Antipsychotic medication
 - Mood stabilizers
 - Stimulants
31. Ethan continues to do poorly on his tests in AP Human Geography. Instead of studying for the tests he blames his scores on the teacher. Ethan believes that the tests are too hard and even if he studies it won't matter. Ethan is experiencing...
- An internal locus of control
 - Reciprocal determinism
 - High self-efficacy
 - An external locus of control
 - High positive regard
32. Which of the following is an example of a person with high self-efficacy?
- Dan has a positive self concept and is feeling good about himself
 - Amy is confident in her ability to take the upcoming psychology test
 - Tom believes in himself and knows he can succeed in life
 - George is worried about the upcoming psychology test and does not think he will do well
 - Dave has been struggling at work which has caused him to view himself in a negative way
33. Aiden is a strong supporter of the same political party his parents support. When asked why he supports the party he does not have a clear answer, but he is confident in his decision to support it. What stage in James Marcia's identity model is Aiden most likely in?
- Foreclosure
 - Identity diffusion
 - Moratorium
 - Identity achievement
 - Formal operational
34. Which of the following is not an example of semantic memory?
- The date of your best friend's birthday
 - The definition of semantic memory
 - The address of your home
 - The directions to get to your school
 - Your memory of your first kiss
35. While playing outside Sophia fell off the swingset. Now whenever she goes outside she displays anxious behavior and avoidant behavior whenever she is near the swingset. Connecting this situation with classical conditioning; what is the CS and what is the UCS in this scenario
- Falling; swingset
 - Swingset; avoidant behavior
 - Avoidant behaviors; swingset
 - Falling; avoidant behavior
 - Swingset; falling
36. Which of the following best connects with Kinesthesia?
- The ability to feel pain in different body parts
 - The ability to be able to perceive the sensation of touch
 - The ability to be able to speak
 - The ability to perceive the position and movement of individual body parts
 - The ability to maintain a balance



37. The graph above shows the standard deviation curve for test scores. The mean of the scores is 100, and the standard deviation is 10. What is the percentile rank for a score of 120?

- 13.5%
- 50%
- 68%
- 97.5%
- 99%

38. What is the role of the pituitary gland?

- Communicate with the other glands around the body to produce hormones
- To control the production of melatonin and regulate a person's sleep cycles
- Regulate a person's calcium levels in their blood
- Produce hormones that regulate a person's blood pressure, oxygen intake, and salt levels
- Create the hormones testosterone, estrogen, and progesterone

39. The idea that for a person to notice a difference between two stimuli, the two stimuli must differ by a constant percent and not a constant amount is known as _____

- Sensory transduction
- Weber-Fechner law
- Retinal disparity
- Habituation
- Absolute threshold

40. Which of the following would align with the cognitive approaches view on personality disorders?

- Disorders originate in an individual's genetics
- Disorders occur when an individual has an incongruent self-concept
- Disorders are the result of repressed unconscious thoughts
- Disorders occur from dysfunctional thoughts or beliefs
- Disorders are the result of abnormalities that occur in an individual's nervous system

41. _____ developed a type of psychotherapy called cognitive therapy. The focus is on dealing with depression, with the goal being to change a person's thinking

- Aaron Beck
- Albert Ellis
- Sigmund Freud
- Mary Cover Jones
- Carl Rogers

42. Richard is trusting, kind, helpful, and a little bit gullible. Based on this information, which of the following Big Five trait measures would Richard most likely score high on?

- Conscientiousness
- Agreeableness
- Neuroticism
- Openness
- Extraversion

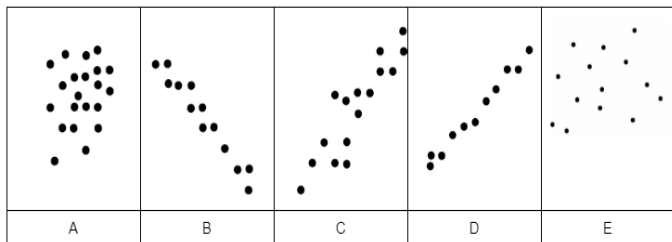
43. During _____, of Erik Erikson's stages of development, an individual is able to separate items in the environment. The individual understands what is theirs and what is someone else's. Here important life events include potty training.

- Identity vs. role confusion
- Initiative vs. guilt
- Autonomy vs. shame/doubt
- Generativity vs. stagnation
- Intimacy vs. isolation

44. Ben is trying to remember his father's apple pie recipe. He can remember the first few steps and the final step but is struggling to remember the steps in the middle. This best connects with which of the following answers?
- Source amnesia
 - Dual-track memory system
 - The serial position effect
 - Elaborative encoding
 - Anterograde amnesia
45. Sam started studying for the AP Psychology national exam a month before the test. Each day he would study for 30 minutes, he noticed that as time went on he had to spend less time reviewing information that he previously studied. When Sam took the AP Psychology exam he felt prepared and had high self-efficacy. Which of the following encoding strategies did Sam most likely use?
- Rote rehearsal
 - Mnemonic device
 - Semantic encoding
 - Organizational encoding
 - Distributed practice
46. Individuals who have had a split brain procedure done have their corpus callosum cut. Which of the following best illustrates how this procedure impacts an individual?
- The person will go through a severe personality change
 - The brain will no longer be able to form new memories
 - The left and right hemisphere will no longer be able to communicate
 - The person will see a decrease in their fluid and crystallized intelligence
 - The body will no longer be able to function without regular treatment
47. Alex has been struggling in school, he is disengaged from class and does not show interest in trying to understand the material. His teachers notice that he often comes to school tired, hungry, and wearing the same clothes from the day before. Which of the following perspectives would argue that the reason Alex is struggling in school is because his basic needs are not being met, which prevents him from caring in school and reaching self-actualization.
- Psychodynamic
 - Behavioral
 - Gestalt
 - Humanistic
 - Cognitive
48. Affiliation motivation is...
- A biological cycle that motivates a person to return their body to homeostasis
 - An individual's belief in their ability to perform a certain task
 - Motivation that comes from external rewards
 - A drive to want to belong and be with others
 - Motivation that comes from within a person
49. Tina's parents are strict parents, they expect her to do exactly as she is told without any questions. Which of the following parenting styles matches with this example?
- Authoritarian
 - Permissive
 - Negligent
 - Authoritative
 - Resistant
50. Identify a positive symptom of schizophrenia.
- Lethargy
 - Withdrawal from social events
 - Hallucinations
 - Trouble with speech
 - Lack of pleasure

51. Zach has been studying for his final for the past three days. When he is studying he often also watches YouTube and texts with his friends. Zach reviews one unit a night and does not go back to a unit once he reviewed it. When it came to the day of the test Zach felt prepared, but when he took the test he was surprised by the questions and felt frustrated because he did not feel prepared for the test. Which of the following answers explains why Zach could not remember the information he needed for the test?
- Zach created mood-congruent memories, this caused Zach to not remember the information he studied since he was not in the same emotional state
 - Zach created context-dependent memories, which caused him not to remember the information he studied since the setting was different
 - Zach never correctly encoded the information since his attention was split while studying and he did not utilize effective encoding strategies
 - Zach is experiencing the encoding specificity principle, which is when memories are linked to the content in which they are created
 - Zach is experiencing the serial position effect and can not remember the information that he studied at the beginning of his studies
52. When reflecting on his life Brett could not see any mistakes. Everything he did in life he believed he was successful at. Which of the following concepts is Brett displaying?
- False consensus effect
 - Self-serving bias
 - Confirmation biases
 - Halo effect
 - Just-world hypothesis
53. Which perspective would focus on treating the behaviors, not the internal or mental causes behind a person's condition?
- Behavioral
 - Cognitive
 - Humanistic
 - Social
 - Biological
54. According to Freud, which of the following controls an individual's primal drives, impulsive nature, and immediate satisfaction?
- Id
 - Superego
 - Ego
 - Libido
 - Superid-edo
55. Julian Rotter would agree with which of the following statements?
- A person's personality is the result of a battle between the id and superego
 - A person's personality is a person's self-concept
 - A person's personality develops over time and is based on what behaviors are reinforced
 - A person's personality is set at birth and does not change
 - A person's personality is genetic and only slightly changes throughout a person's life
56. Alice is reading the newspaper and reads a story about an airplane crash that happened in India. She becomes afraid of flying and thinks that it would be safer to drive to her destination instead of flying. Alice's fear is most likely due to...
- Anchoring bias
 - Framing
 - Representativeness heuristics
 - Heuristics
 - Availability heuristic

57. Jack got a new job at the Mall of America. On his first day he was surprised that he did not get lost in the back hallways, he believes that the tour he got during training is responsible for him not getting lost. Which of the following answers would connect with this situation?
- Trial and error learning
 - Latent learning
 - Social learning
 - Observational learning
 - Operant conditioning
58. After attending a rock concert Kate notices that she can no longer hear the same range of sounds that she used to be able to. Which of the following might have happened to Kate?
- There may have been damage to the cilia or auditory nerve causing Kate to experience sensorineural hearing loss
 - Kate may be experiencing conductive hearing loss due to sounds not being able to move through her ear
 - Kate most likely damaged her semicircular canals which has resulted in sensorineural hearing loss
 - There may have been damage to the oval window preventing the amplification of sounds and resulting in conductive hearing loss
 - The auditory canal most likely ruptured causing sensorineural hearing loss
59. Which of the following is a characteristic of NREM Stage 2 sleep?
- External muscles are paralyzed and internal muscles become active
 - Very light sleep that only lasts between 5-10 minutes
 - Deepest state of sleep, normally lasts around 30 minutes
 - Here a person is most likely to experience hypnagogic sensations
 - Transitional stage, which is characterized by a series of k-complexes and sleep spindles
60. Mr. Sinn loves to play video games. When he is playing video games he is consciously pressing the buttons on his controller. Which part of the nervous system is Mr. Sinn using?
- Autonomic nervous system
 - Somatic nervous system
 - Sympathetic nervous system
 - Parasympathetic nervous system
 - None of the above
61. Sophia is trying to better understand how the students at her school feel about the current dress code at the school. She decides to conduct a study with the hope of being able to gather information from at least 70 percent of the student population. Which research method is Sophia most likely to use?
- Naturalistic observation
 - Case study
 - Correlational-study
 - Experimental method
 - Survey



62. Which of the following scatter plots shows a strong negative correlation?

- Chart A
- Chart B
- Chart C
- Chart D
- Chart E

63. Isabella is swimming in the ocean when she sees a shark out in the distance. Which of the following will most likely happen according to the James-Lange theory?

- Isabella will assess the shark, determine the shark is dangerous, and then feel fear
- Isabella will become scared, then assess the shark, and lastly come to the conclusion the shark is dangerous
- Isabella will start shaking, then become scared without processing the shark
- Isabella will assess the shark, start shaking, and then become scared
- Isabella will feel fear, start shaking, and won't assess the shark

64. According to Gordon Allport, _____ are strong dominant traits that are the main identifying factor of a person, while _____ are less influential traits

- Central; cardinal
- Central; secondary
- Cardinal; central
- Cardinal; secondary
- Secondary; central

65. Which of the following explains the difference between a manic episode and a depressive episode?

- Mania is a state of withdrawal and depression is a state of excitement and overactivity
- Depressive episodes last for two years and manic episodes only last for a day
- Manic episodes involve a person's central nervous system and depressive episodes involve a person's peripheral nervous system
- Depressive episodes is a state of withdrawal and manic episodes is a state of excitement
- Manic episodes happen with major depressive disorder and depressive episodes happen with persistent depressive disorder

66. Which of the following tests is not a projective personality test?

- Rorschach test
- Inkblot test
- MMPI test
- Thematic apperception test
- Drawing test

67. Everytime you get an A in school your parents take away one choru at home. This motivates you to keep getting good grades in all of your classes. This is an example of a _____

- Positive reinforcement
- Negative reinforcement
- Positive punishment
- Negative punishment
- None of the above

68. What is the difference between situational and dispositional attribution?
- Dispositional attribution is when a person blames the situation for causing a behavior. Situational attribution is when a person blames a person's internal characteristics
 - Situational attribution is external rewards that motivate an individual. Dispositional attribution is internal rewards that motivate an individual
 - Dispositional attribution is when a person blames an individual's internal characteristics for a behavior. Situational attribution is when a person blames the situation for causing a behavior
 - Situational attribution occurs when an individual has an incongruent self concept. Dispositional attribution occurs when an individual has low positive regard
 - Dispositional attribution is when an individual relies on intrinsic rewards. Situational attribution is when an individual relies on external rewards
69. The first time Ezra washed his parents car his parents gave him positive reinforcements for helping with the car. After Ezra washed the car multiple times he noticed that he only got positive reinforcements when he put soap on the entire car, causing him to make sure that the entire car had soap on it. Eventually he only got positive reinforcement when he washed all the soap off the car and dried the car. What is the process that was being used in this scenario?
- Association
 - Stimulus generalization
 - Higher-order conditioning
 - Shaping
 - Negative reinforcement
70. What is the difference between the CNS and PNS?
- The CNS is the different nerves that branch off from the brain and spine, while the PNS is the brain and spinal cord
 - The PNS is the control center that gives orders to the body, while the CNS allows the brain to communicate with the different structures in the body
 - The CNS controls the production of the different hormones, while the PNS is responsible for the body's neurotransmitters
 - The PNS is the different nerves that branch off from the brain and spine, while the CNS is the brain and spinal cord
 - The CNS controls the electrical messages sent by the body, while the PNS controls the chemical messages sent by the body
71. Drug A binds to acetylcholine receptors preventing action. Which of the following is most likely true about drug A?
- Drug A is a teratogen
 - Drug A is an agonist substance
 - Drug A is an antagonist substance
 - Drug A will most likely increase the availability of neurotransmitters in the synapse
 - Drug A is impacting the endocrine system
72. While at work Matt comes across information that he has never seen before. He notices that he is taking more time to go through the information, and he is not able to quickly complete his task. Which of the following concepts best connects with this situation?
- Bottom-up processing
 - Top-down processing
 - Heuristics
 - Encoding failure
 - Schema

73. Which of the following would be most likely to create a flashbulb memory?
- A person's daily drive to work
 - A traumatic experience
 - Having a positive experience with friends
 - Reading a good book
 - Having a bad day at school
74. Alice went to her friend's birthday party. She met a lot of great people but at the end of the party she could only remember the names of the first couple of people she met. This is because of the...
- Recency effect
 - Intermediate effect
 - Primacy effect
 - Distributed effect
 - Amnesia effect
75. Which of the following scenarios is an example of eustress?
- Jack is worried about going in front of his entire company to accept the employee of the year award
 - Susan's mom recently passed away
 - Luna is concerned that her company will have to file for bankruptcy
 - Whenever Ava comes home from school her parents are always fighting
 - Jake is worried that his relationship might be ending
76. Which of the following best describes gender schema theory?
- The ability for children to create mental categories for masculinity and femininity
 - Flexible categories that are created to explain different anatomical differences between children
 - A combination of nature and nurture on the development of gender roles
 - The primary and secondary sex characteristics of a child
 - None of the above
77. Tommy believes that morality is defined by what gets social approval from others. He seeks to follow rules that will help him gain social approval from other individuals. He is most likely in what stage of Kohlberg's moral stages?
- Punishment obedience orientation (Preconventional morality)
 - Instrumental-exchange orientation (Preconventional morality)
 - Good-child orientation (Conventional morality)
 - Law-and order orientation (Conventional morality)
 - Social-contract orientation (Postconventional morality)
78. The _____ looks to see if an individual is able to determine right from wrong at the time of a crime. It focuses on the cognitive or moral incapacity of an individual
- American law institute test
 - M'Naghten rule
 - Thematic apperception test
 - Rorschach test
 - MMPI test
79. During _____, of Erik Erikson's stages of development, an individual becomes focused on guiding the next generation. Important life events are parenting and giving back to the community.
- Industry vs. inferiority
 - Integrity vs. despair
 - Identity vs. role confusion
 - Generativity vs. stagnation
 - Initiative vs. guilt
80. Noelle spent hours writing her English paper and proofreading it. When she got her paper back she discovered that she missed a variety of spelling and grammar errors. Which of the following answers would explain how she missed these?
- Bottom-up processing
 - Top-down processing
 - Opponent-processing theory
 - Difference threshold
 - Weber-Fechner law

81. A _____ is a neuroimaging technique that uses a series of advanced x-rays, which can be used to help locate brain damage or tumors.
- EEG
 - CT
 - PET Scan
 - MRI
 - fMRI
82. The behaviorist perspective believes that a person's personality is...
- Shaped by the conscious and unconscious mind
 - Grows with an individual and is influenced by their needs and environment
 - Shaped by the environment in which a person is part of
 - Determined by the different genetic factors the individual possess
 - Evolves over time thanks to the collective unconscious
83. Lauren feels like she is being judged by others, she is worried she will embarrass herself in public, and often avoids social situations to stop her from feeling overwhelmed. Which of the following disorders is consistent with Lauren's symptoms?
- Schizoaffective disorder
 - Social anxiety disorder
 - Obsessive-compulsive disorder
 - Persistent depressive disorder
 - Bipolar disorder
84. Which of the following would best match with Piaget's concrete operational stage?
- When Nick drops his toy off the couch it rolls under the couch causing Nick to forget about the toy
 - Emma thinks that everyone must feel the same way she feels
 - Tj loves to engage in economic discussions on inflation and the Federal Reserve
 - Sarah understands that $5+5 = 10$ and if you subtract 5 it will equal 5
 - Lexa gets shy around people that she has never met
85. Sophia has started to make consonant vowel sounds. She can now say Ma ma and Da da, but can not use words with a larger meaning. What is most likely happening with Sophia?
- She has entered the babbling stage
 - She has entered the holophrase stage
 - She can now use telegraphic speech
 - Overgeneralization is impacting her speech
 - She has started to use morphemes
86. Which of the following is an example of cognitive dissonance?
- Participants in Milgrim's obedience study wanted to stop shocking the learner. But felt the need to continue, due to the researcher telling them to continue. Which caused the participant to experience stress and anxiety
 - Bella just got a new job that she loves. While at work she ran into a variety of problems that she was not sure how to solve. She decided to ask for help and after talking with her new coworkers she was able to find solutions for all of the problems
 - Participants in Solomon Asch's experiment conformed to the confederates' responses. This created social norms for the room in which everyone followed
 - Rachel stayed up all night trying to study for her exam. The next day during her exam she fell asleep during the test, which caused her to do poorly on the exam
 - Nate is hungry and is trying to figure out what food to eat. He wants to get Sushi, but because he is so hungry he decides to get fast food instead

87. An aptitude test...
- Seeks to show what information an individual knows
 - Seeks to see the potential an individual has
 - Seeks to see what personality traits an individual has
 - Seeks to see what emotional disorders a person may have
 - Seeks to show an individual's biases
88. Miguel lacks a conscience, he is aggressive, and often disregards others' safety. Which of the following disorders is consistent with Miguel's symptoms?
- Avoidant personality disorder
 - Schizotypal personality disorder
 - Narcissistic personality disorder
 - Borderline personality disorder
 - Antisocial personality disorder
89. Jared gets teased everytime he walks through the A1 lockerbay at school, because of this Jared decided to just avoid the A1 lockerbay and take a different route to class. Which of the following strategies did Jared use for his problem?
- External locus of control
 - Problem-focused coping
 - Overjustification effect
 - Emotion-focused coping
 - Stimulus discrimination
90. Jenny noticed that in school the girls that got better grades and participated in cross country were more socially accepted compared to other peer groups. This caused Jenny to try harder in school and try out for the cross country team. Which of the following provides the best explanation for the change in Jenny's behavior?
- Classical conditioning
 - Insight learning
 - Operant conditioning
 - Observational learning
 - Law of effect
91. Lacy was trying to complete a project at work, in order to complete the project on time she created a list of each logical step and completed the tasks in the correct order. Which problem solving method is Lacy using?
- Heuristics
 - Syllogism
 - Diagnosis
 - Algorithm
 - Divergent thinking
92. _____ are memories that are consciously made, while _____ are memories that are learned with an individual's awareness
- Implicit; explicit
 - Episodic, semantic
 - Explicit; implicit
 - Echoic memory; iconic memory
 - Iconic memory; echoic memory
93. Lisa constantly has the feeling that she is outside of her body. Which of the following may connect with Lisa's feelings?
- Derealization episode
 - Hypochondriasis
 - Depersonalization episode
 - Conversion disorder
94. Alfred Adler believed that individuals strive to...
- Move through their different repressed sexual feelings
 - Continue to reach self-actualization by satisfying their different needs
 - Conquer their inferiority complex
 - Gain control of their ego to repress the id and superego
 - Be able to master free association
95. When an individual changes their behavior because they want to conform to the group that surrounds them it is known as _____
- Informational social influence
 - Social facilitation
 - Group polarization
 - Bystander effect
 - Normative social influence

96. Kora notices that when she is playing hockey with her team in front of a large crowd she performs better. Which of the following could explain this increase in performance?
- Social facilitation
 - Social inhibition
 - Group polarization
 - Deindividuation
 - In-group bias
97. Nate is conducting an experiment to see how effective his new drug is at helping college students stay awake. For his experiment he randomly selected 100 different college students from the three universities in the area. In Nate's experiment what is the independent variable?
- 100 different college students
 - Nate's new drug
 - The impact the drug has on the college students
 - Amount of sleep the participants got before the study
 - The population of the three colleges
98. Which of the following accurately describes a confounding variable?
- A characteristic in an experiment that is being changed or manipulated
 - The response from a participant from an experiment
 - Characteristics or factors that impact an experiment that were not accounted for
 - Variables that are screened out of an experiment when conducting the prescreening of a study
 - An unpredicted result of an independent variable in an experiment
99. In Pavlov's experiment Pavlov would place food down for the dog and ring a bell. When the dog saw the food the dog would start drooling. Eventually Pavlov took the food away and just had the dog hear the bell ring. The result was the dog would salivate at the sound of the bell, anticipating that food would come. In this experiment what are the UCS and UCR?
- Food; Dog drooling
 - Dog drooling; Food
 - Bell; Food
 - Food; Bell
 - Bell; Drooling
100. Mike is watching the news and hears about how the president's new health care plan is going to fail. The station Mike is watching is known for supporting the president's opposition and often presents stories in a way that makes the president look bad. After watching the news Mike becomes certain that the new health care plan is going to fail and should be stopped. What most likely happened that caused Mike to form his opinion?
- The news utilized representativeness heuristics to convince Mike the president's plan was bad
 - The news used framing to skew Mike's thinking in a particular direction
 - The information was presented to Mike with anchoring bias to skew his thoughts
 - The news used diagnosis to eliminate wrong answers
 - The news utilized Mike's formal reasoning to guide him to a conclusion